

Grantmaker Membership

Benefits 2022



Maine
Philanthropy
Center

Grantmaker membership is open to grantmaking foundations, donor advisors, DAFs, grantmaking public charities, and philanthropic individuals.

Now is the time to rejoin this dynamic community.

Over the last year, we have invested in clearly defining our mission, vision, and a strategic framework to get us there. By re-joining Maine Philanthropy Center, your organization will be part of our mission to provide opportunity, leadership, and support to advance the effectiveness of philanthropy in Maine and its ability to make a meaningful difference.

Our community is made of foundations (corporate, private, public, family, and community), nonprofits, individuals, and other philanthropic practitioners. Maine is the epicenter of our work and we come together to build relationships, deepen knowledge, and move resources. Our diverse membership is our strength; it allows us to facilitate cross-sector collaboration, create shared understanding, dismantle ineffective silos, and shift power to ensure that Maine is a leader in advancing equity.

Our vision is to collaborate to create a vibrant, just, and equitable Maine.

A vibrant, just, and equitable Maine is built upon the acknowledgment of the deep, rich history and contributions of the Wabanaki peoples and works to be in a restorative relationship with Indigenous communities and the earth – so that the natural environment is stewarded sustainably and with care. It is a state that promotes and secures the health and wellbeing of all Maine people. In this Maine, all people are ensured, under the law and in practice, equal rights, protections, opportunities, and access to the resources they need regardless of race, gender identity and expression, age, ability, socio-economic level, immigration status, ethnicity, or sexual orientation.

At the Maine Philanthropy Center, we believe in collective impact. As Maine's only association for this sector, everything we do is informed by member feedback and is focused on creating a vibrant, just, and equitable community. When you invest in a membership, not only do you get benefits designed for your organization, but you are also supporting nonprofits' access to critical data, research, and programming.

The tenets of our new strategic framework:



BUILD COMMUNITY

We believe effective change is best achieved with networked organizations that encompass the rich diversity and experiences of Mainers, so we create opportunities for those engaged in social impact work to connect, collaborate, and advance more equitable power structures.



ADVANCE LEARNING

As a learning organization we commit to build the capacity of the sector through ongoing and relevant education. As our values state, we are what we learn. Learning is how we grow as a philanthropic community to become the most effective we can be.



MODEL LEADERSHIP

We are a statewide organization connected to national nonprofit and philanthropic conversations and as such are in a unique position of privilege. We are committed to using this to introduce and elevate important topics and resources to our sector—especially those relating to equity, inclusion, and justice.



STRENGTHEN ADVOCACY

Policy and issue advocacy are critical to making Maine a more equitable state. MPC strives to lead our sector to harness its collective power in advocacy, allowing transformational change for the community. Informed policy change solves the problems philanthropy addresses.

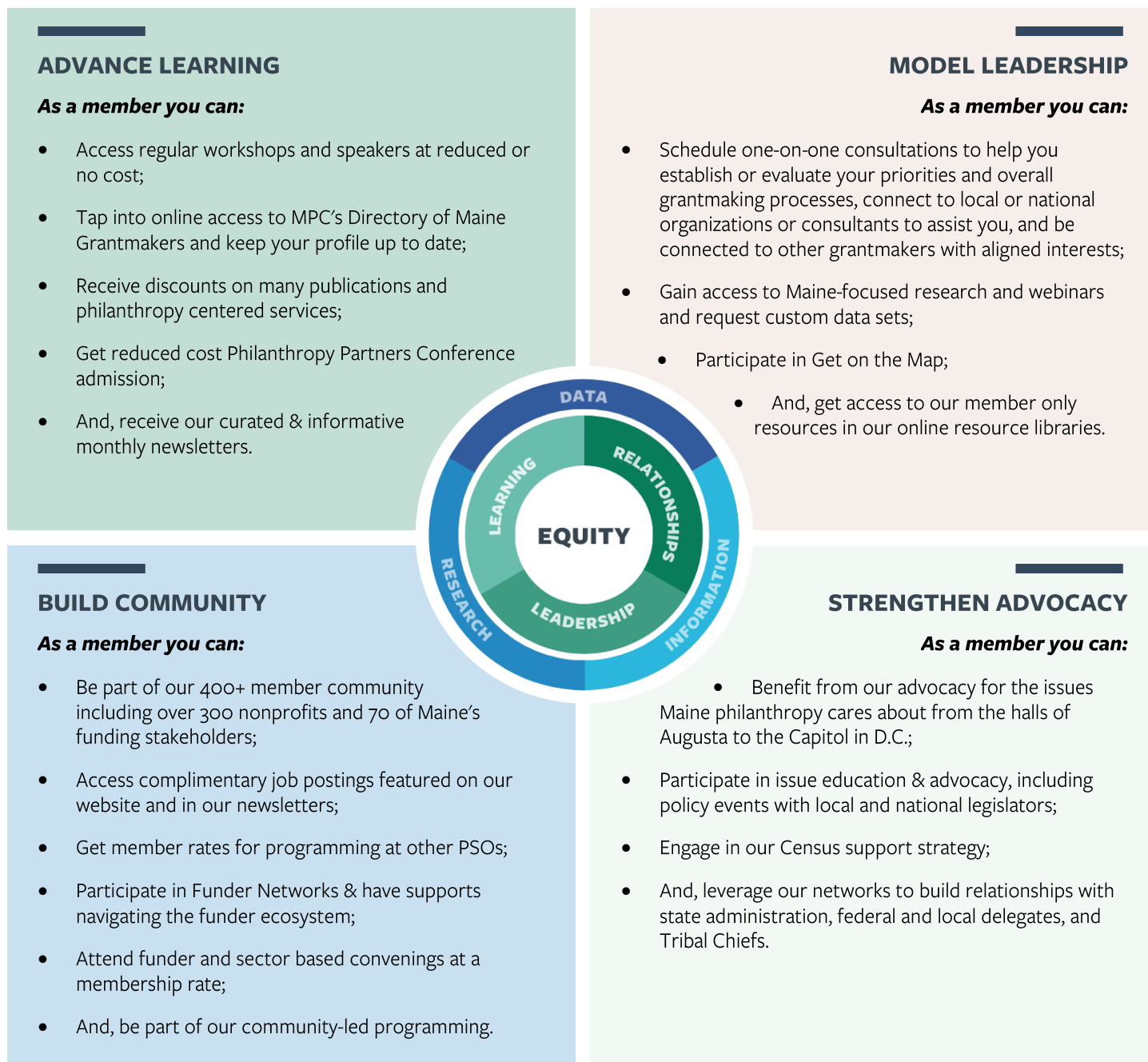
Grantmaker Membership

Benefits 2022



Maine
Philanthropy
Center

Below is our new strategic framework which serves as a road map for our vision. You'll notice equity is at the center of everything we do. Your member benefits are mapped to these core strategies and are available to anyone within your organization including staff, Board members, and trustees.



Maine Philanthropy Center
USM Glickman Family Library, Room 321
314 Forest Avenue
Portland, Maine 04101
Telephone: (207) 780-5039

For more information about membership,
please reach out to
Sarah@mainephilanthropy.org